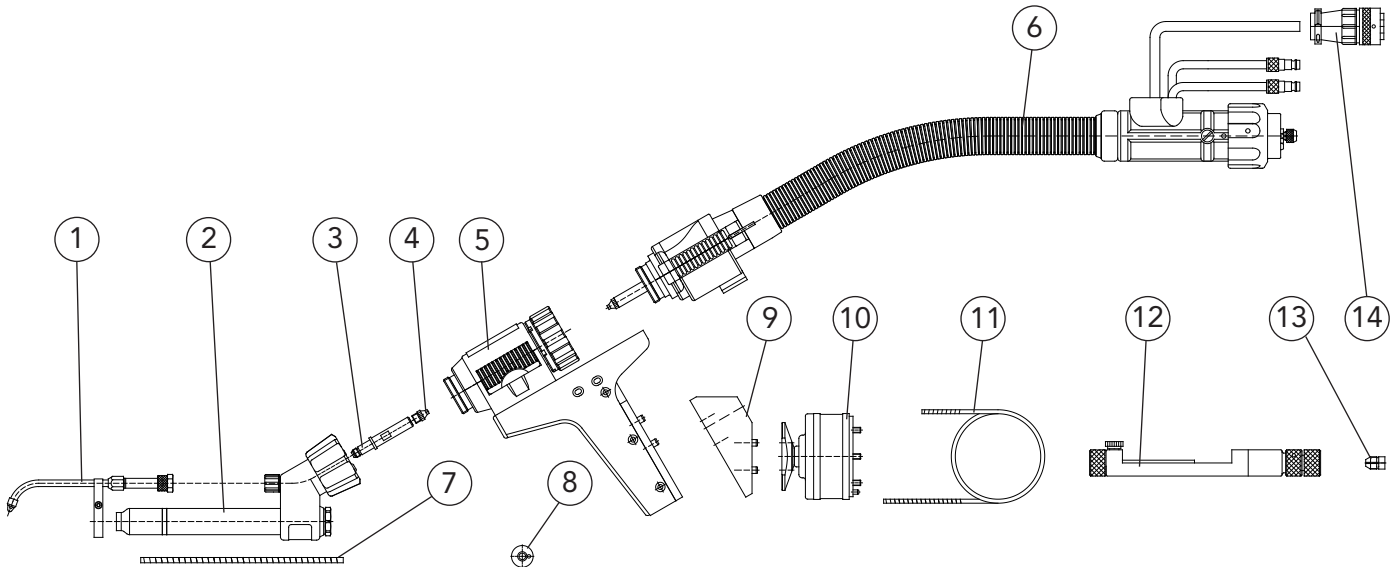


Doubly separable version
for PUSH-PULL
Torch head

DIX MEPTTZ 600 SAZ

DIX TETZ 400



Pos.	Description	Dimension	Part number	Article number
1	Cold wire set		DIX KD 400	648 540 001
2	Torch head, compl.	0°	DIX TETZ 400	641 140 001
3	Connecting piece, TEPTZ		DIX TEPS 400	649 066 001
4	Intake nozzle		DIX MEP 152	639 153 600 5
5	Torch bracket (with integrated wire feeder without drive roll)		DIX MEP 200	631 620 010
6	Torch set, without torch head	1,2 m	DIX MEPTTZ 600 - 1,2 SAZ	630 664 014
	Torch set, without torch head	1,4 m	DIX MEPTTZ 600 - 1,4 SAZ	630 664 005
	Torch set, without torch head	2,0 m	DIX MEPTTZ 600 - 2,0 SAZ	630 664 004
7	Liner	∅ 2,2 mm / 0,3m	DIX DS 4/2,2 - 0,3	639 300 002
8	Drive roll (for steel)	∅ 1,0 mm S	DIX MEP 322 - 1,0 S	639 322 100 0
9	Retainer		DIX HA 201	683 510 204
10	Shock sensor	∅ 78,5 / 65 mm	DIX SAS 200	683 100 200
11	Liner	∅ 2,9 mm / 1,7m	DIX DS 4/2,9 - 1,7	623 000 517
	Liner	∅ 2,9 mm / 1,9m	DIX DS 4/2,9 - 1,9	623 000 519
	Liner	∅ 2,9 mm / 2,5m	DIX DS 4/2,9 - 2,5	623 000 525
12	Adjusting gauge		DIX EL 400	648 020 000 0
13	Clamping sleeve (for presetting of the electrode with adjusting gauge)		DIX SH 400 - 3,2	648 050 032 0
14	Plug set (for GREEN-line wire feeders, only assembled available)		DIX MEX 100	639 077 001

► Standard equipment for electrode diameter 3,2 mm with gas nozzle diameter 12,5 mm, DIX GD 408, and wire diameter 1,0 mm steel. TCP: 495 mm to robotic flange (Electrode stand out: 5 mm). The corresponding adapter flange you find in the accessories list! Use the special spanner DIX SLAT 2 to fix the torch heads. Variants deviating of the standard fittings on request.