

Torch sets

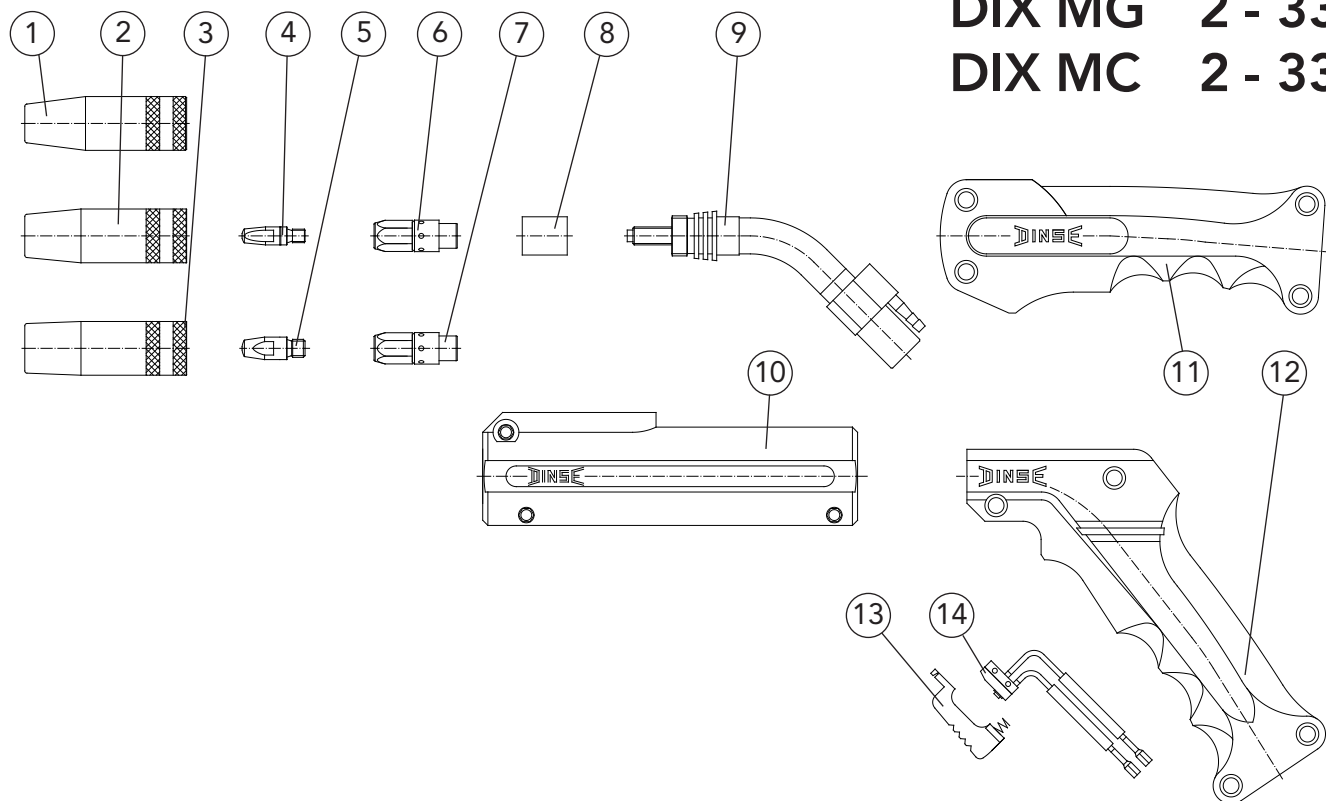
2 - 330

Torch type

DIX MS 2 - 330

DIX MG 2 - 330

DIX MC 2 - 330



Pos.	Description	Dimension	Part number	Article number
1	Gas nozzle	∅ 13 mm	DIX 1 - 2 - 313 TR	629 010 313 0
2	Gas nozzle	∅ 15 mm	DIX 1 - 2 - 315 TR	629 010 315 0
3	Gas nozzle	∅ 18 mm	DIX 1 - 2 - 318 TR	629 010 318 0
4	Contact tip	M6	DIX 3 - 2 - xx	629 030 0xx
	Contact tip	CR - ZR M6	DIX 3 - 2 - xx CR -ZR	629 033 0xx
5	Contact tip	M8	DIX 3 - 2 - xx M8	629 030 1xx
	Contact tip	CR - ZR M8	DIX 3 - 2 - xx M8 CR - ZR	629 033 1xx
6	Tip adapter	M6	DIX 4 - 2 - K M6	629 040 010
7	Tip adapter	M8	DIX 4 - 2 - K M8	629 040 110
8	Insulating sleeve		DIX 10 - 2	629 100 000
9	Torch neck	52°	DIX 6 - 2 - 330	629 060 331 0
10	Handle		DIX 7 - 2 - 303 C	629 070 330
11	Handle		DIX 7 - 2 - 303 S	629 070 310
12	Handle		DIX 7 - 2 - 303 G	629 070 300
13	Trigger		DIX 9 - 2	629 090 000
14	Microswitch		DIX 8 - 2	629 080 000

subject to change!

ELGB-MS-MG-MC2-330/K03



xx - Standard diameter: 0,9 mm, 1,0 mm and 1,2 mm. Other diameters on request.

DINSE G.m.b.H. · Tarpen 36 · 22419 Hamburg · Phone: +49-(0)40-658 75-0 · Fax: -200 · E-Mail: info@dinse-gmbh.com · www.dinse-gmbh.com