

Standard fittings

ROBOTIC and AUTOMATIC TORCHES

liquid cooled

TIG



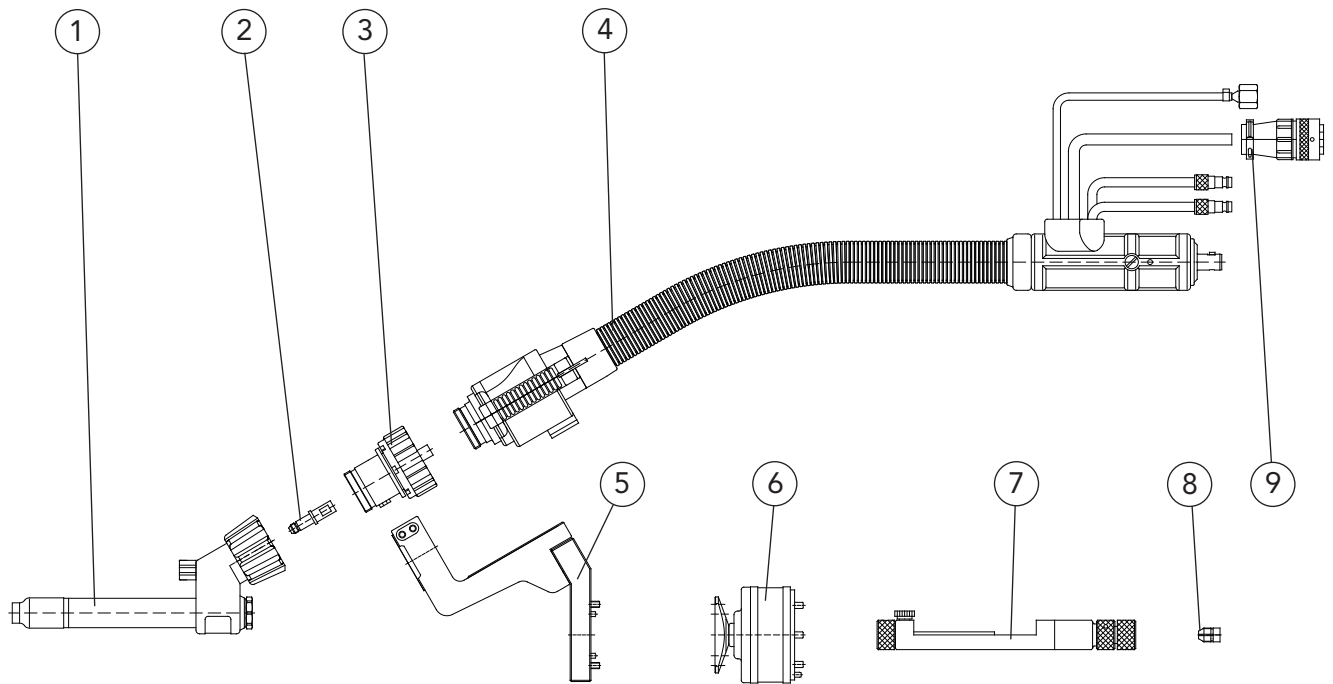
DINSE

Doubly separable version

DIX METTZ 600 ZAW

Torch head

DIX TETZ 400



Pos.	Description	Dimension	Part number	Article number
1	Torch head, compl.	0°	DIX TETZ 400	641 140 001
2	Connecting piece, TETZ		DIX TES 400	649 066 002
3	Torch body		DIX MEK 300/600	631 015 005
4	Torch set, without torch head	5,0 m	DIX METTZ 600 - 5,0 ZAW	630 166 043
	Torch set, without torch head	7,0 m	DIX METTZ 600 - 7,0 ZAW	630 166 044
5	Torch bracket, fixed		DIX PHF 110	683 500 104
6	Shock sensor	∅ 78,5 / 65 mm	DIX SAS 100	683 100 001
7	Adjusting gauge		DIX EL 400	648 020 000 0
8	Clamping sleeve (for presetting of the electrode with adjusting gauge)		DIX SH 400 - 3,2	648 050 032 0
9	Plug set (for shock sensor, only assembled available)		DIX MEX 100	639 077 001

► Standard equipment for electrode diameter 3,2 mm with gas nozzle diameter 12,5 mm, DIX GD 408. TCP (for DIX SAS 100): 437 mm to robotic flange (electrode stand out: 5 mm). The corresponding adapter flange you find in the accessories list! Use the special spanner DIX SLAT 2 to fix the torch heads. Variants deviating of the standard fittings on request.

subject to change!

SEGB-TETZ600K04

