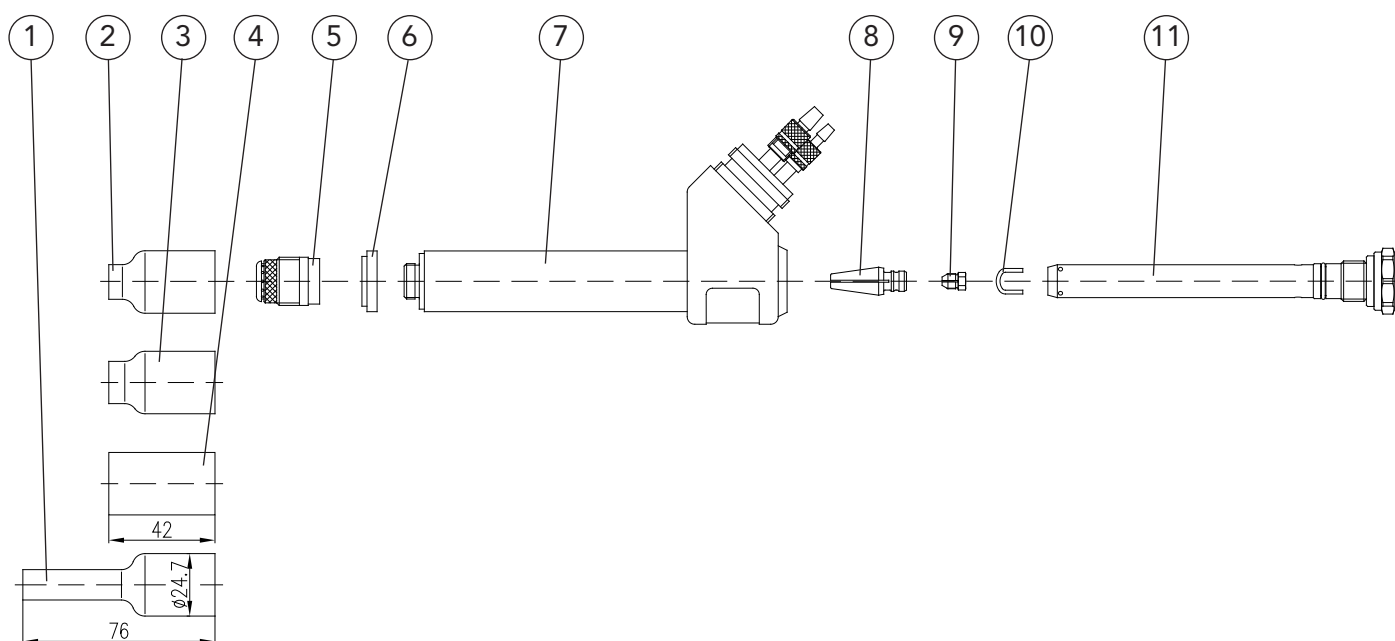


Fixed version

DIX TAZ 400

Torch sets (torch)



Pos.	Description	Dimension	Part number	Article number
1	Gas nozzle	ø 8,5 mm	DIX GD 405L	649 015 004
2	Gas nozzle	ø 9,5 mm	DIX GD 406	649 015 001
3	Gas nozzle	ø12,5 mm	DIX GD 408	649 015 002
4	Gas nozzle	ø19,5 mm	DIX GD 412	649 015 003
5	Gas lens		DIX GL 4xx	649 105 0xx
6	Sealing washer		DIX DIS 400	649 025 400 0
7	Torch neck		DIX 6 - 4 - 400 AZ	649 065 004 0
8	Electrode collet		DIX SZ 4xx	649 055 4xx 0
9	Clamping sleeve		DIX SH 400 - xx	648 050 0xx 0
10	Retaining bracket		DIX HK 400	649 275 040 016
11	Electrode collet housing		DIX SZA 400	649 275 040 0

xx - Standard diameter: 2,4 mm and 3,2 mm. Other electrode diameters on request.