

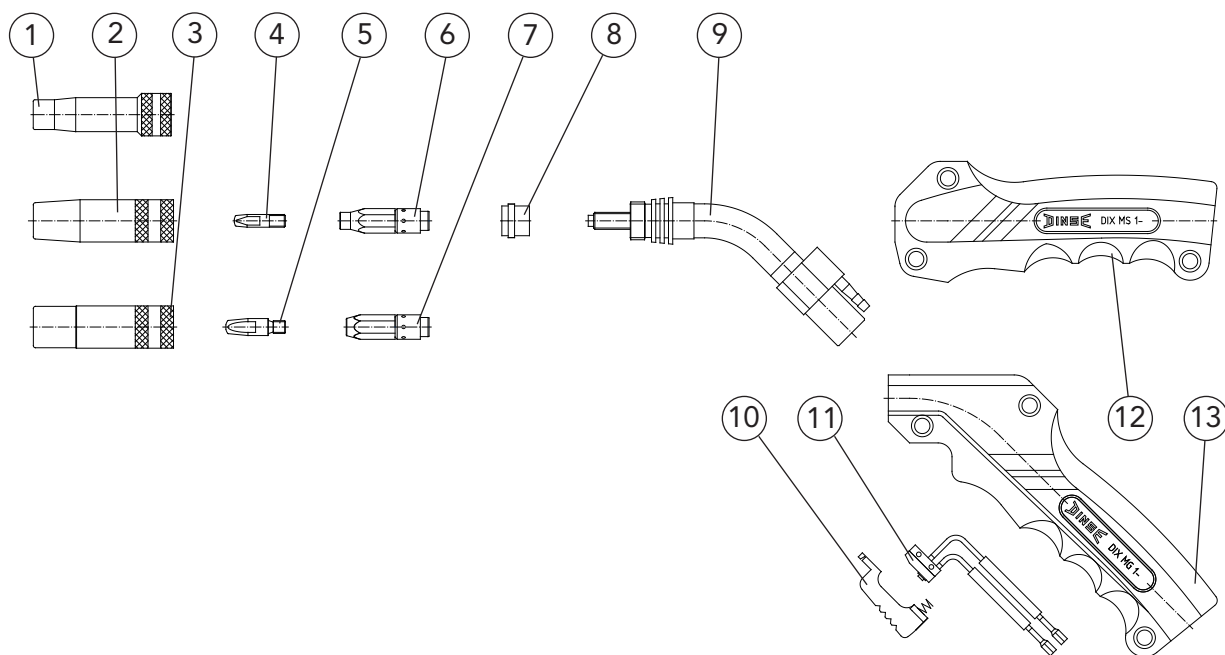
Torch sets

1 - 230

Torch type

DIX MS 1 - 230

DIX MG 1 - 230



Pos.	Description	Dimension	Part number	Article number
1	Gas nozzle	∅11 mm	DIX 1 - 1 - 311 TRR	619 010 611 0
2	Gas nozzle	∅13 mm	DIX 1 - 1 - 312 TR	619 010 312 0
3	Gas nozzle	∅16 mm	DIX 1 - 1 - 316 TR	619 010 316 0
4	Contact tip	M6	DIX 3 - 1 - xx	619 030 0xx
	Contact tip	CR - ZR M6	DIX 3 - 1 - xx CR - ZR	619 033 0xx
5	Contact tip	M6	DIX 3 - 2 - xx	629 030 0xx
	Contact tip	CR - ZR M6	DIX 3 - 2 - xx CR - ZR	629 033 0xx
6	Tip adapter	M6	DIX 4 - 1 - L	619 040 020
7	Tip adapter	M6	DIX 4 - 1 - K	619 040 010
8	Insulating sleeve		DIX 10 - 1 - 222	619 100 202
9	Torch neck		DIX 6 - 1 - 230	619 060 231 0
10	Trigger		DIX 9 - 1	619 090 000
11	Microswitch		DIX 8 - 2	629 080 000
12	Handle		DIX 7 - 1 - 202 S	619 070 210
13	Handle		DIX 7 - 1 - 202 G	619 070 200

xx - Standard diameter: 0,8 mm, 0,9 mm and 1,0 mm. Other diameters on request.

subject to change!

ELGB-MS-MG1-230\K03

